



**WE WORK LIFE** - *Produtos Farmacêuticos Unipessoal, Lda*  
*Rua de Campolide Edifício 5 N°351E,8°A1070-034 Lisboa Portugal*

**CENTRAL WORK** - *29 BLVD Tower 1 & 2 - Emaar*  
*Sheikh Mohammed Bin Rashid BLVD-Downtown Dubai UAE*

[www.centralworkeau.com](http://www.centralworkeau.com)

+351 219833081

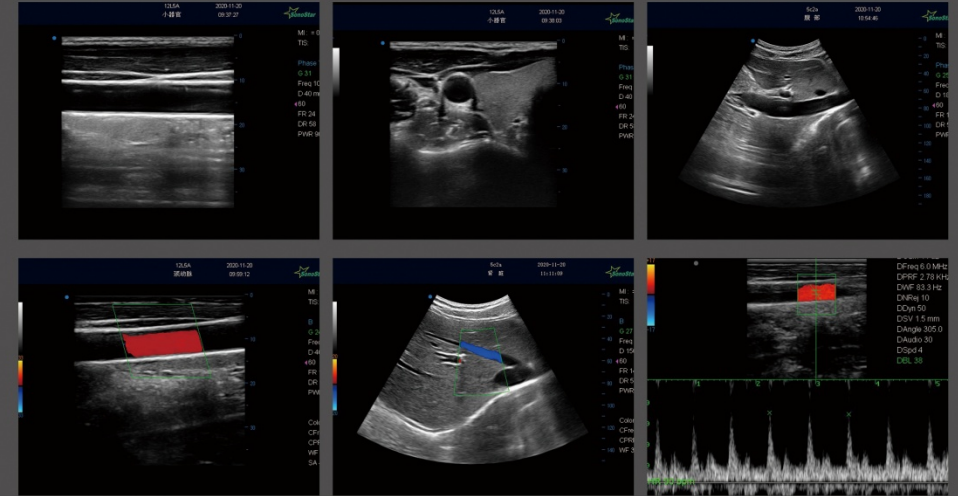
+351 916655075





## Laptop Color Doppler





## Equipment Instructions

For examinations of abdomen, heart, gynecology, obstetrics, urology, small organs, pediatrics, blood vessels, etc.

## Main technical parameters and functions

- Technology platform: WINDOWS platform
- Physical channels  $\geq 32$ , Probe array elements  $\geq 80$
- Machine size: 400mm(W) x 394mm(H) x thickness 172mm
- Weight: Net Weight  $\leq 7.5$ kg (with one probe  $\leq 8.2$ kg, with two probes  $\leq 8.9$ kg)
- Packing size: 500mm(L) x 500mm(W) x 430mm(H)
- Display: 15 inch LCD high resolution
- Fully digital imaging technology: multi-beam synthesis, real-time point-by-point dynamic focus imaging, pulse inverse harmonic composite imaging, spatial composite, image enhancement and noise reduction
- Imaging modes: B mode, M mode, Color (color Doppler) mode, PW (pulse Doppler) mode
- Image display mode: B, double frame, 4 frame, B+M, M, B+Color, B+PW, PW, B+Color+PW, B/BC dual real-time-Supported probes: 3C6C convex array probe, L4C/8L4C/10L25C linear array probe, 6E1C transvaginal probe, 6C15C/3C20C micro-convex probe, 6I7C rectal probe;
- Probe frequency: 4.3-12.0MHz
- Movie playback: 500-1500 frames;
- Image magnification: real-time scanning (B, B+C, 2B, 4B), status: 10 times
- Image storage: support JPG image format and AVI movie format,
- Support local storage;
- Support DICOM, comply with DICOM3.0 standard
- Built-in workstation: support large-capacity hard disk ( $\star \geq 128$ GB), support patient data retrieval and browsing
- Volume calculation software package: abdomen, gynecology, obstetrics, small organs, heart, blood vessels, etc.
- Battery: Built-in large-capacity lithium battery, continuous working time  $\geq 1.5$  hours
- Image parameters

### B mode

1. Grayscale mapping:  $\geq 15$  files
2. Frame related:  $\geq 8$  files
3. Edge enhancement:  $\geq 15$  files

4. Image enhancement:  $\geq 5$  files
5. Space composite: switch adjustable
6. Image flip: up and down, left and right
7. Maximum scanning depth:  $\geq 250$ mm

### M mode

1. Sweep Sleep:  $\geq 4$  levels adjustable
2. Line Average:  $\geq 5$  files

### PW mode

1. SV size/position: SV size 1.0–8.0mm adjustable
2. PRF:  $\geq 5$  files
3. Sweep Sleep:  $\geq 8$  levels adjustable
4. Correction angle: 360 degrees
5. Spectrogram flip: switch adjustable
6. Doppler sound:  $\geq 20$  files

### Color/PDI mode

1. Wall filter  $\geq 6$  gears adjustable
2. Color afterglow: 2DB–80DB
3. Color priority: 1-255
4. Pulse frequency:  $\geq 8$  gears adjustable

### -Measurement and calculation

1. B/C mode routine measurement: distance, area, circumference, volume, angle, area ratio, distance ratio
2. Routine measurement in M mode: time, slope, heart rate, distance
3. Routine measurement in Doppler mode: heart rate, resistance index, pulsatility index, time, blood flow, peak blood flow
4. Obstetrics application measurement: double parietal diameter, femur length, head circumference, abdominal circumference, head arm diameter, gestational sac length, first stage, second stage, general obstetrics, amniotic fluid index, routine
5. Gynecological B-mode application measurement
6. Heart B, M mode application measurement
7. Vascular PW mode application measurement
8. Small organ B mode application measurement
9. Urinary B-mode application measurement
10. Pediatric B mode application measurement
11. Abdominal B mode application measurement

## Standard configuration and optional accessories

### Standard Configuration:

- 1 x full digital host (128G hard disk built in the host); 1 x 3C6C convex array probe; 1 x 7L4C linear array probe;
- 1 x user manual; 1 x power cable;

### Optional accessories:

- 6E1C transvaginal probe; 6C15C micro-convex probe; 6I7C rectal probe; USB report printer; black and white video printer; color video printer; puncture frame; trolley;